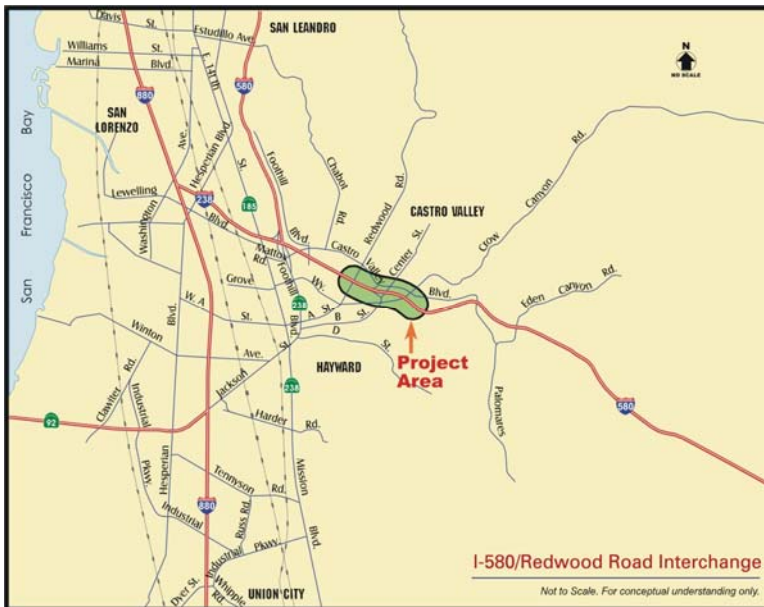




Alameda
County
Transportation
Authority

I-580/Redwood Road Interchange

ACTA MB 239



Project Sponsor:

Alameda County Transportation Authority (ACTA)

ACTA Project Contact:

Arun Goel
ACTA Project Manager
(510) 267-6129

Project Description:

The project involves improving access to and from I-580 in Castro Valley. The improvements include creating a full interchange at Redwood Road (i.e. adding a new eastbound on-ramp and westbound off-ramp), constructing a new eastbound off-ramp from I-580 to Grove Way, and removing two existing ramps: the eastbound off-ramp to Center Street and the westbound on-ramp from Castro Valley Boulevard.

Project Status Report:

In July 2005, the ACTA Board adopted Amendment No. 1 to the 1986 Expenditure Plan which deleted the Route 238 (Hayward Bypass) Project and added four projects, including this project. This project provides additional financial contributions to the ACTIA I-580/Castro Valley Interchange Improvements (ACTIA 12).

Recent Activities:

- Construction Notice to Proceed (NTP) was issued in early September 2008. Phase 1 construction activity is continuing and approximately 32% of the construction contract is complete.
- Negotiation meetings have been successfully completed with the mortuary.

Upcoming Activities:

- Continue with Phase 1 construction activities.
- Closure of Center Street off-ramp from Eastbound 580 upon completion off-new off ramp at Redwood Road (anticipated for early July 2009)

Project Issues:

Issue	Action Plan
None at this time.	



Alameda
County
Transportation
Authority

Project Cost/Funding (\$ x 1,000)

Cost Estimate by Phase	
Scoping	\$ 650
PE/Environmental	\$ 650
Final Design (PS&E)	\$ 3,500
Right-of-Way	\$ 5,300
Utility Relocation	\$ -
Construction	\$ 23,500
Equipment Purchase	\$ -
Total	\$ 33,600

Funding	
Measure B (ACTA)	\$ 15,000
Federal	\$ 1,960
State	\$ 7,315
Regional	\$ -
Local	\$ -
Other	\$ -
Measure B (ACTIA)	\$ 11,525
Total	\$ 35,800

Project Schedule by Phase

<i>Project Phase</i>	<i>Schedule</i>	2006	2007	2008	2009	2010	2011	2012	2013
Construction	06/08 - 06/10								