



ALAMEDA COUNTY
CONGESTION MANAGEMENT AGENCY

1333 BROADWAY, SUITE 220 • OAKLAND, CA 94612 • PHONE: (510) 836-2560 • FAX: (510) 836-2185
E-MAIL: mail@accma.ca.gov • WEB SITE: accma.ca.gov

December 5, 2007

RECEIVED

DEC 12 2007

ACTIA

SC.

Ms. Tess Lengyel
ACTIA Programs and Public Affairs Manager
426 17th Street, Suite 100
Oakland, CA 94612

Re: Annual Program Compliance Report of 2006/2007 Measure B Funds

Dear Tess:

Please find attached our Annual Program Compliance Report describing how the program funds were spent during the reporting period as well as our plans for expending unspent funds in the coming fiscal year.

If you have any questions, please call me at (510) 836-2560

Sincerely,

A handwritten signature in cursive script, appearing to read "Matt Todd".

Matt Todd
Manager of Programming

Encl.

Program Compliance Report
Reporting Period July 1, 2006 through June 30, 2007

Page 1 of 14

PROGRAM COMPLIANCE REPORT COVER SHEET
Reports are due December 31, 2007

Agency Name:

Alameda County Congestion Management Agency (ACE Rail)

Date Submitted:

12/04/2007

Report Checklist:

Check all the Programs you will include with your report and add any additional attachments. Clearly label your attachments according to the convention provided below. All attachments must be easily readable when reproduced in black and white.

To check a box, double click on the box and mark "Default Value" as "Checked."

- Annual Program Compliance Report - Mass Transit Funds
- Annual Program Compliance Report - Local Streets and Roads Funds
- Annual Program Compliance Report - Bicycle and Pedestrian Safety Funds
- Annual Program Compliance Report - Paratransit Funds
- Table 1 – Summary of Program Expenditure Accomplishments

List any additional attachments included in the application:

Note: electronic version does not need to include attachments of photos, newsletters, articles, and signage; the hard copy mailed version requires all necessary attachments.

- Attachment A: (Mass Transit Attachments - add title)
- Attachment B: (Local Streets and Roads Attachments - add title)
- Attachment C: (Bicycle and Pedestrian Attachments - add title)
- Attachment D: (Paratransit Attachments - add title)
- Other Attachments: (please list)

An authorized representative of the reporting agency must sign below, affirming that the statements in the report package are true and complete to the best of their knowledge.

Note: Hard copy submittal must have original signatures. Electronic version must include name and title of signator.

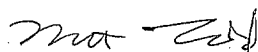
Signature:

Name/Title of Agency Manager:

Matt Todd/Manager of Programming

Date:

Signature:



Name/Title of Agency Finance Manager:

Yvonne Chan/Accounting Manager

Date:

Submittal Requirements:

Two reports are required to be submitted by Measure B recipients: the **Program Compliance Report** and the **Compliance Audit**.

The annual **Program Compliance Report** has two parts: a PDF report form and Table 1, a summary of Program Expenditure Accomplishments excel spreadsheet with multiple, separate tabs. Measure B recipients are required to submit an electronic copy of the PDF Program Compliance Report form and Table 1, the Summary of Program Expenditure Accomplishments excel spreadsheet, by December 31, 2007.

In addition to electronic submissions, the following documents must also be received in the mail, postmarked no later than December 31, 2007:

- PDF Annual Program Compliance Report form (wet signatures with hard copy)
- Table 1, Summary of Program Expenditure Accomplishments excel spreadsheet
- All attachments (photos, newsletters, articles, signage, etc.)*

* No attachments are required to be submitted with the electronic version; however attachments must be included with the hard copy mailing.

The **Compliance Audit** must be electronically submitted and postmarked no later than December 27, 2007.

Directions:

Electronic Submission

To submit the **Program Compliance Report**, use the 'Submit by email' button on the top right hand corner of the first page of the PDF report form and directions will follow on the screen. Depending on the Adobe Acrobat version you use, you may need to email Table 1, the Summary of Program Expenditure Accomplishments excel spreadsheet separately. The electronic files must be submitted to Seung Cho at scho@actia2022.com on or before their respective due dates noted above. If you submit a draft copy in error or encounter problems submitting the report, please notify Seung Cho either by email or by phone at (510) 267-6113, so the erroneous information can be deleted, or assistance can be provided to submit the form.

The PDF report form and Table 1, the Program Expenditure Accomplishments excel spreadsheet, are available for download on the ACTIA website at <http://www.actia2022.com>.

An electronic version of the Final **Compliance Audit** must be submitted by December 27, 2007 to scho@actia2022.com.

Hard Copy Submission

The Annual **Program Compliance Report** Cover Sheet must have the signatures of the City Manager and the City Finance Manager, or the appropriate equivalent for other agencies. All required attachments must be included with the hard copy mailing. The Annual **Compliance Audit** must also be submitted in hard copy by December 27, 2007 and signed by the independent auditor.

Mailed documents must be received by ACTIA on or before their respective due dates noted above. The completed Annual **Program Compliance Report** and the completed Annual **Compliance Audit** should be addressed to Seung Cho, ACTIA, 1333 Broadway, Suite 300, Oakland, CA 94612.

Mass Transit Programs Report Summary

Agency Mass Transit Program Contact Name:

Phone Number:

Fax:

e-mail:

- ACTIA Mass Transit Program funds** received/expended (accrual basis). These numbers should be the same as those reported in your compliance audit.

05/06 UNSPENT BALANCE	06/07 REVENUES	INTEREST/ OTHER INCOME	EXPENDED	06/07 ENDING BALANCE
\$ 1,203,596	\$ 2,301,183	\$ 48,887	\$ 1,832,970	\$ 1,720,696

If applicable, please explain why expenditures in Reporting Year 2006/2007 were less than the amount the Agency received and what the Agency intends to do with the additional funds. (200 words)

The Alameda County required contribution for the ACE service was less than the Measure B allotments for FY 2006/2007. The CMA intends to continue to allow the unspent funds to accumulate as a reserve to meet the need for future expenditures for the Alameda County share of the ACE operating expenses and/or station operating or maintenance expense as detailed in the Measure B funding agreement.

2. **Newsletter Published** (Agency or ACTIA Newsletter) highlighting Mass Transit projects/programs funded by Measure B: *Please include a copy of the newsletter in the Attachments.*

Yes No

Publication date(s)

March 2007

3. **Website address(es):**

Your website should describe Mass Transit projects and programs funded by Measure B, with updated and accurate information, and also should have a link to www.actia2022.com. Please include printout in the Attachments

www.acma.ca.gov

4. **Signage** used in the Mass Transit projects/programs indicating the use of Measure B funds. *Please include photos of signage in the Attachments.*

Yes No

Describe Signage: (100 words)

Signs are placed on the trains listing Measure B as a funding partner. Examples of the signs and photos of the signage on the trains are included in Attachment C.

5. **Mass Transit Programs / Projects Description**

Describe the Mass Transit programs/project(s) implemented with Measure B funds in fiscal year 2006/2007. Complete Table 1 by clicking on the 'Mass Transit' tab in the Excel Spreadsheet and listing project name, planning area, project description, project benefits, estimated number of trips provided with Measure B funds, total project cost and Measure B expenditures. Include photographs in Attachments.

Question 6, 'Future Planned Mass Transit Programs/Projects' is on the next page. Please continue.

6. Future Planned Mass Transit Programs / Projects

Describe the planned Mass Transit programs/project(s) to be implemented with Measure B funds and the projected schedule (550 words)

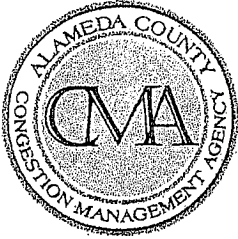
These funds will continue to be used for the ongoing operations costs of this service. The CMA intends to continue to allow the unspent funds to accumulate as a reserve to meet the need for future expenditures for the Alameda County share of the ACE operating expenses and/or station operating or maintenance expenses. With a reserve established in FY 03/04, the CMA used a portion of the funds for administrative costs in FY 06/07, as specified in our agreement with ACTIA. The administrative costs were less than 5% of the annual allocation.

Table 1 - Summary of Program Expenditure Accomplishments
Measure B-Funded Mass Transit

Project Type	Project Name	Planning Area	Description	Benefits	Estimated Number of Trips provided with Measure B funds in FY 06/07	Total Cost	Measure B Expenditures FY 06-07
	ACE Train Operations	South and East Area	ACE Train Operations	The service provides one of the limited transit options to the Alameda Portion of I-580 through the Tri-Valley and the I-680 Sunol Grade to Silicon Valley	15% X 706,686 = 106,003 trips	\$ 12,273,500	\$ 1,832,970

**ACTIA Programs Annual Report
2006/2007 Reporting Year**

• Attachement A - Newspaper Publication



ALAMEDA COUNTY CONGESTION MANAGEMENT AGENCY

1333 BROADWAY, SUITE 220 • OAKLAND, CA 94612 • PHONE: (510) 836-2560 • FAX: (510) 836-2185
E-MAIL: mail@accma.ca.gov • WEB SITE: accma.ca.gov

Transportation Update

March 2007

CMA Retreat Features State Leaders

The CMA held its annual retreat on March 9th. A major topic of the retreat was the recently approved CTC program of projects for the Corridor Mobility component of the statewide transportation bond. A panel composed of the following individuals provided the Board with insight into how the state will seek to implement the projects:

- James Bourgart, Deputy Secretary, Business, Transportation & Housing Agency
- Will Kempton, Caltrans Director
- John Barna, Executive Director, California Transportation Commission
- Steve Wallauch, Lynn Suter & Associates

Topics included the CTC's proposed project delivery council, how the CTC and the State could help with removing barriers to timely delivery, how Caltrans will partner with local transportation agencies in the delivery of the projects, how a pool of qualified contractors will be developed and what implementing legislation is being considered.

CMA Takes Action to Deliver State Bond Funded Projects

As noted in a previous newsletter, Alameda County received nearly \$400 million from the State bond measure for highway improvements on I-80, I-880 and I-580. The CMA will take a lead role in bringing these projects to construction. In order to deliver these projects and other CMA programs, at its meeting in March, the Board approved a combination of additional staff positions and consultant assistance. This action was the result of a

six-month study by Management Partners that identified ways to respond to the increasing responsibilities of the agency.

Construction Complete on First Segment of the Int'l/Telegraph Rapid Bus Corridor

At its March meeting, the CMA accepted the work of the contractor for the Broadway segment of the rapid bus project. Construction is nearly complete on the other two segments on Telegraph Avenue and International Blvd. This project will provide bus priority for AC Transit's rapid bus program on these three arterials.

Altamont Commuter Express Service Plan for 2007-08

At the March meeting, the CMA approved the proposed service plan for the 2007-08 ACE Service. ACE expanded service with a fourth mid-day train in FY 2006-07 and will continue that service. The CMA is a partner with the San Joaquin Regional Rail Commission and the Santa Clara VTA in providing the ACE Service. Additional information on the service can be found on the ACCMA website or the ACE website at www.acerail.com.

MTC Adopts Program for STIP Augmentation

The transportation bond approved by voters in November includes \$2 billion to augment funding in the 2006 State Transportation Improvement Program (STIP). Alameda County's share of this funding is approximately \$50.7 million. At its February 22nd meeting, the CMA

**ACTIA Programs Annual Report
2006/2007 Reporting Year**

Attachement B - Website Information



ALAMEDA COUNTY CONGESTION MANAGEMENT AGENCY

What's New & Upcoming Projects | Projects | Doing Business with ACCMA | Meetings | Recruitment Reports

About | FAQs | Links | Contact Us | Site Map | Home

Register Your Company Information with ACCMA

RFPs/Bids 12 Month Forecast

ACE Services



Altamont Commuter Express Service

In May 1997, the Alameda County Congestion Management Agency (ACCMA), the San Joaquin Regional Rail Commission, and the Santa Clara Valley Transportation Authority entered into an agreement to create the Altamont Commuter Express (ACE) Joint Powers Authority which operates the ACE Service. The ACE service operates Monday through Friday two roundtrip commuter trains between Stockton and San Jose and one additional roundtrip commuter train along the same route between Lathrop, in San Joaquin County and San Jose. The ACCMA funds the Alameda County share of the ACE service operations with Measure B funds. Measure B is a one-half cent sales tax approved by the voters of Alameda County in November, 2000. The use of the Measure B revenues is overseen by the Alameda County Transportation Improvement Authority. The ACE service will receive 2.12% of the net revenues of Measure B for ACE Service Operations.

Additional information about the Alameda County Transportation Improvement Authority, Measure B, and the ACE service are available at the following links.

[Additional Altamont Commuter Express Information](#)

[Alameda County Transportation Improvement Authority](#)

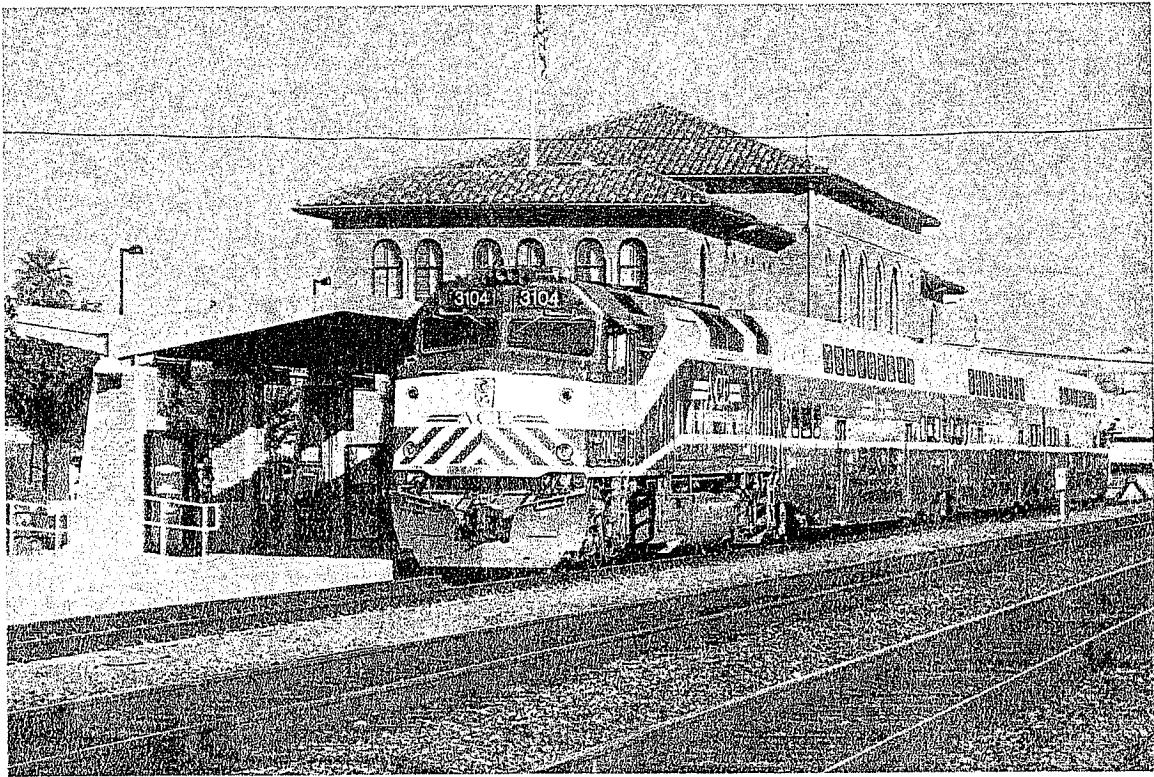
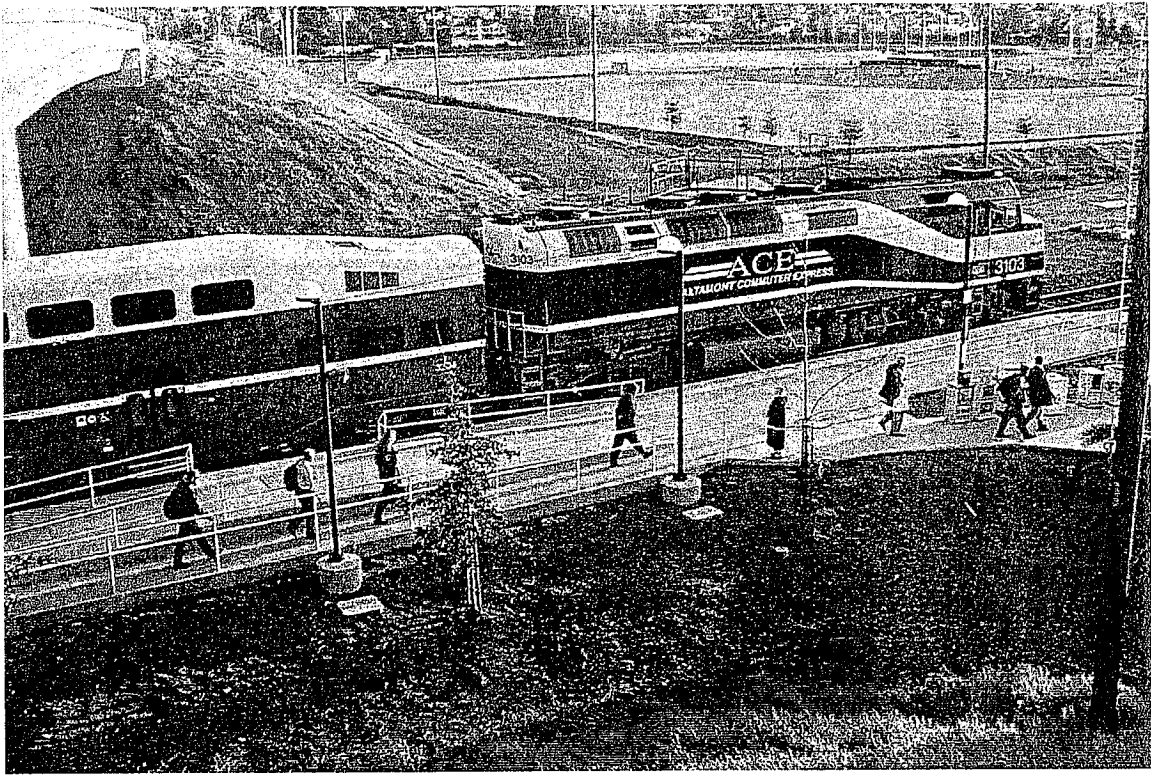
[What's New & Upcoming](#) | [Projects](#) | [RFPs/RFOs](#) | [Meetings](#) | [Newsletters](#) | [About](#) | [FAQs](#) | [Links](#) | [Contact Us](#) | [Site Map](#) | [Privacy Statement](#) | [Home](#)

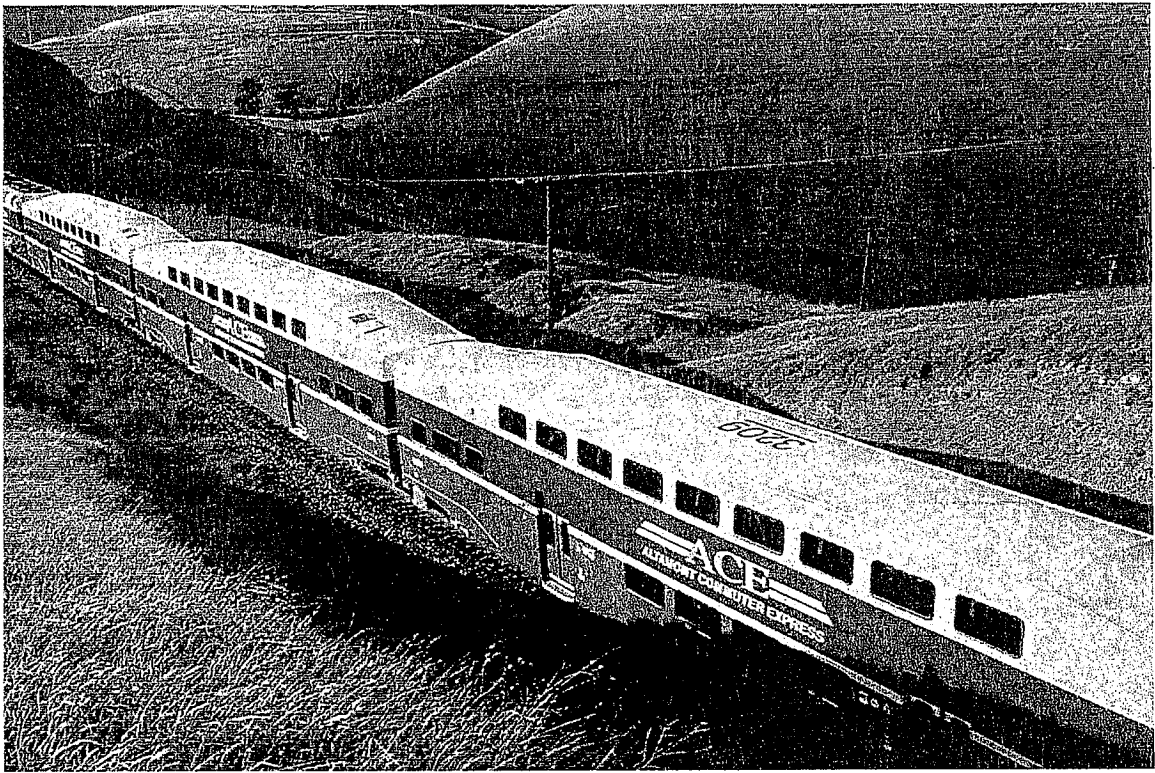


© 2001 - 2007 Alameda County Congestion Management Agency

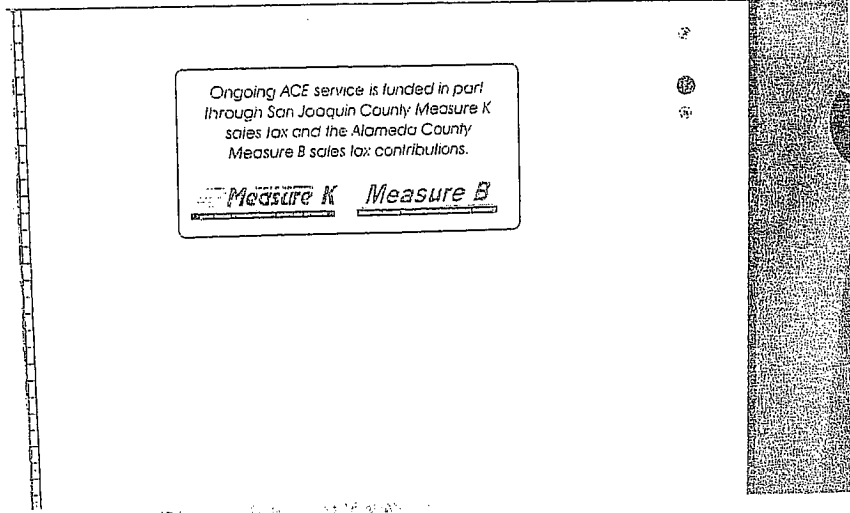
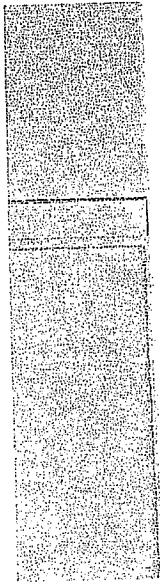
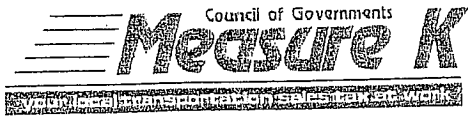
**ACTIA Programs Annual Report
2006/2007 Reporting Year**

Attachement C - Photos of the signage/projects/programs





Ongoing ACE service is funded in part through San Joaquin County Measure K sales tax and the Alameda County Measure B sales tax contributions.



attachment C