



State of the System Planning for Progress

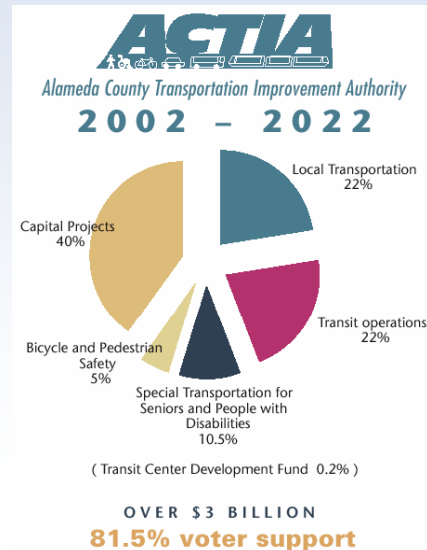
**ACTIA Senior and Disabled
Mobility Workshop
July 30, 2010**

Bonnie Nelson

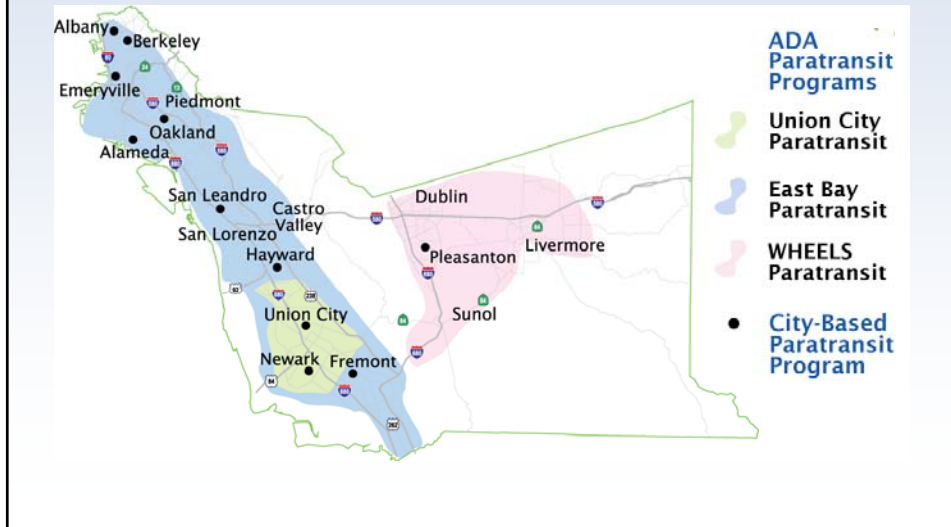
Nelson | Nygaard
consulting associates

Measure B: Meeting Needs in Alameda County

- 10.45% of Measure B revenues dedicated to senior and disabled transportation - nearly \$9 million allocated in FY 09-10
- Largest "paratransit" allocation of any Bay Area sales tax measure
- Over \$81 million dollars has been collected since 2002
- In FY 08-09, over 927,000 rides were served by Measure B recipients



Alameda County Paratransit Services



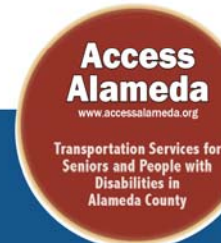
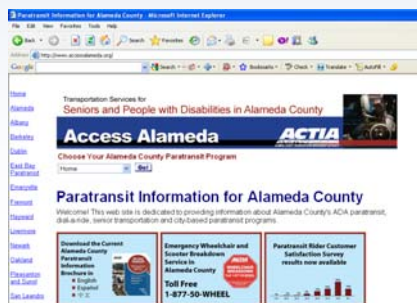
Measure B Gap Grant Program

- 52 projects implemented by public agencies and non-profits
- New and alternative approaches to addressing mobility gaps tested and fine-tuned
- Menu of available mobility options in Alameda County expanded



Access Alameda

- www.accessalameda.org
- Guides in English, Spanish, Chinese, Vietnamese, Tagalog, Farsi



- Accessible Transit in Alameda County
- ADA Paratransit Programs and Eligibility Requirements
- Alameda County's City-Based Paratransit Programs
- Information Resources

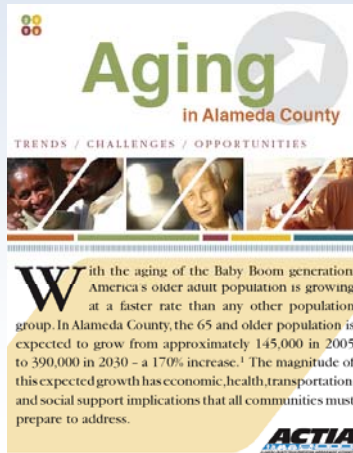
Spring 2008
3rd Edition

Outreach

- **Alameda County Paratransit Information Line: 1-866-901-PARA (7272)**
- Staffing at events and outreach presentations



Resources



Mobility Programs

- **Hospital Discharge Transportation Service**
 - Accessible service at participating hospitals (free to riders)
- **Emergency Wheelchair Breakdown Service**
 - Transportation home or to repair facility for stranded individuals
- **Tri-City Taxi Program**
 - Accessible same-day service pilot

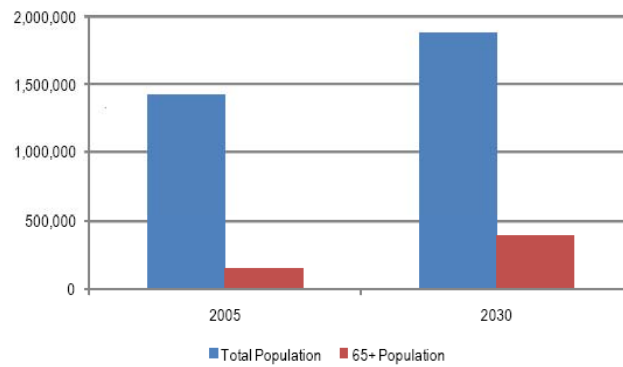


Where are we today?

Aging in Alameda County

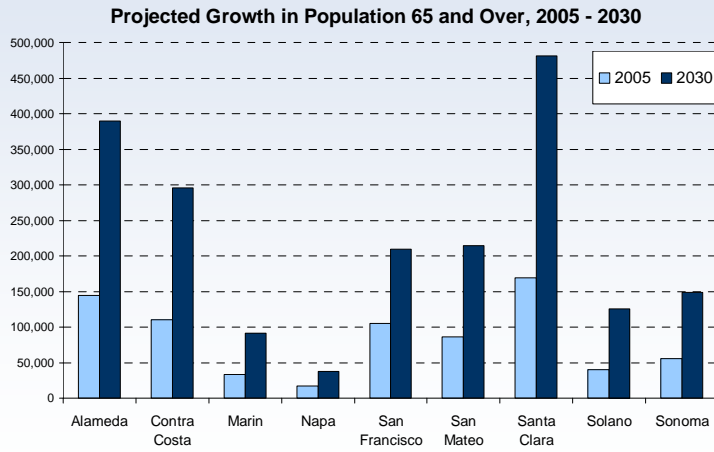


Alameda County Total Population and Older Adult Population, 2005 and 2030 (Projected)



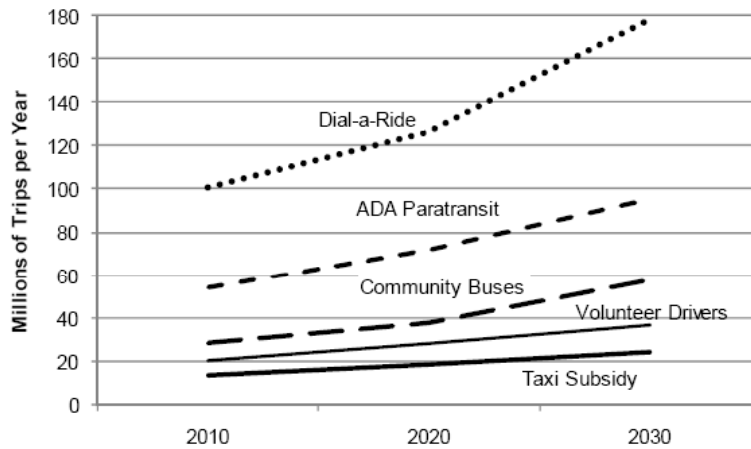
Source: U.S. Census 2005 American Community Survey, ABAG Projections 2005

And throughout the Bay Area



Source: U.S. Census 2005 American Community Survey, ABAG Projections 2005

Increasing needs



American Public Transportation Association, *Funding the Public Transportation Needs of an Aging Population*. 2010

Increasing needs

Funding Needed to Provide a Desirable Level of Public Transportation Services for Older People in the United States

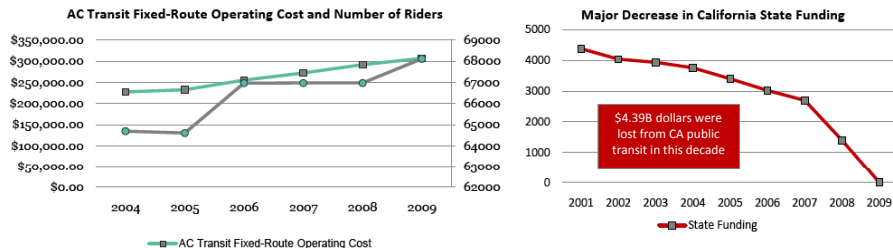
Year	Total Funding Needed*
2010	\$4.2 billion
2020	\$5.4 billion
2030	\$7.5 billion

* Operating costs only.

American Public Transportation Association, *Funding the Public Transportation Needs of an Aging Population*. 2010

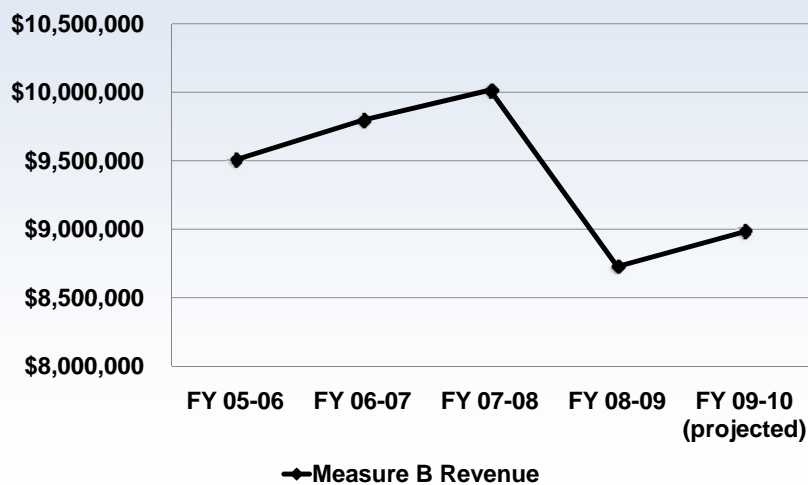
Decreasing funds

Increasing demands - Decreasing funds



Source: ACTIA, January 2010.

Decreasing funds



How will we meet demand?

Comparison of Service Provided in Alameda County, First Half of FY 08 vs. First Half FY 09

Category	FY 2008-2009/ Mid-Year	FY 2009-2010/ Mid-Year	Change	% Change
Total Trips Provided	470,305	447,967	-22,338	-5%
Individual Trips	439,618	426,770	-12,848	-3%
Shuttle Trips	14,208	10,537	-3,671	-26%
Group Trips	11, 938	6,906	-5,032	-42%

How will we meet demand?

Current Estimated Need vs. Trips Provided in Five Regions

Region	Estimated Need	Estimated Trips	Trips as a Percent of Need
S.F. Bay	3,217,596	2,064,048	64%
Portland Trimet	638,794	246,450	39%
Northern Virginia	519,243	482,172	77%
New York	3,814,076	1,247,594	33%
Salt Lake City	1,329,604	358,277	27%

American Public Transportation Association, *Funding the Public Transportation Needs of an Aging Population*. 2010

Where do we go from here?

Where do we go from here?

- Recognize that revenue will not keep up with growth in demand
 - Invest in coordination, engage all partners
- Acknowledge the diverse services and service providers that have a part to play
- Keep accessibility at the forefront
- Recognize that mobility is not entirely a transportation issue
 - Land use, education/training, lifestyle choices

Opportunities for Countywide Coordination and Collaboration

Recommendations from ACTIA Countywide Service Delivery Analysis

1. **Mobility Management:** Coordinate information throughout the county, and assist consumers with information and possible trip planning and scheduling.
2. **Travel Training:** Regionally based travel trainers implementing a countywide program.
3. **Taxi Program Coordinator:** Coordinate all taxi programs funded through Measure B.

Opportunities for Countywide Coordination and Collaboration

4. **Older Driver DriveWell Program:** Extends safe driving and enables older drivers to determine when it is time to explore non-auto alternatives.
5. **Volunteer Driver Program:** Create a countywide program that would oversee recruitment and training of drivers and provide overall coordination.
6. **Group Trip Program:** Potential unified contracting and pooled vehicles.

Opportunities for Coordination

- Greater coordination between public transit planners and City program managers
- Increased coordination between city transportation managers and city planning and permitting departments
- Administrative coordination
- Coordination of programs between multiple cities
- Unified contracts
- Coordination of programmatic functions

Today's Workshop

- Builds on ongoing efforts in the county and region to **better coordinate transportation services** for seniors and people with disabilities.
- Lays the groundwork for a **mobility management** program that will better connect consumers with the range of transportation options available in their communities.



Key Questions

- Where do **partnerships** need to be strengthened and **efforts** synergized?
- Do individuals **understand the options available** to them, and have the information necessary to make choices that support mobility?
- As a county and region, are we **coordinating transportation resources** in a way that maximizes mobility given available resources?

Call to Action:

Now is the perfect time to build partnerships and invest in planning for the future we want.